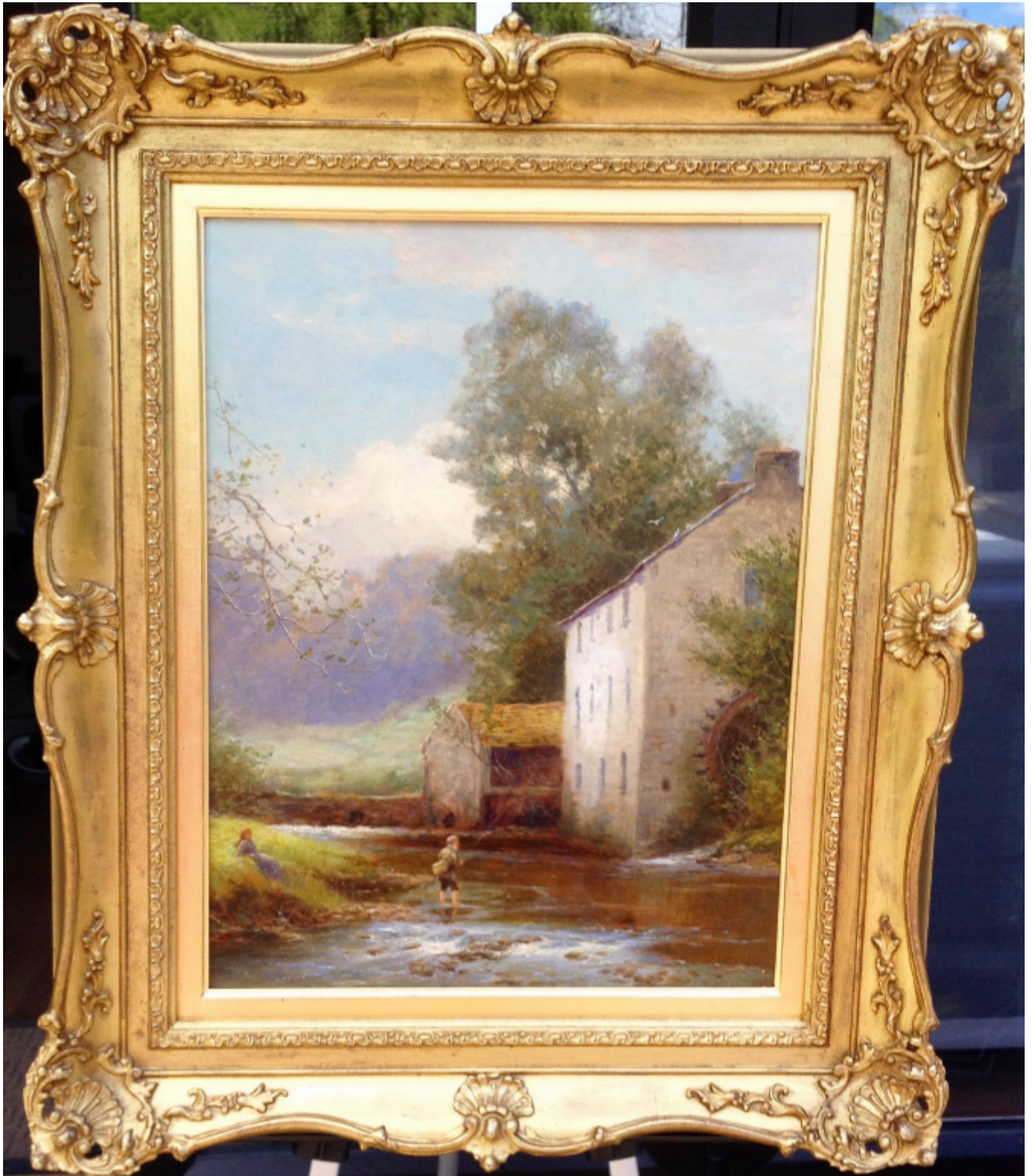


By the Watermill

Sold



REF: 1758

Width: 71.5 cm (28.1")

Depth: 61 cm (24")

Description

Born in Malvern in Worcestershire, John Bates Noel (also known as John Bates) was born into a highly artistic family. David Bates, an artist in both oil and watercolour and specialised in depicting Welsh and Scottish landscapes, was a close relative. Like David Bates, Noel painted in the style of his fellow Birmingham School followers, Joseph Thors and William Henry Mander. His composition is informal and his brushwork is fluid and loose, conveying a wonderful sense of movement. Like Joseph Thors, his landscapes often incorporated elements of interest such as country dwellings, farm houses, farmyard animals and informal figure groups.