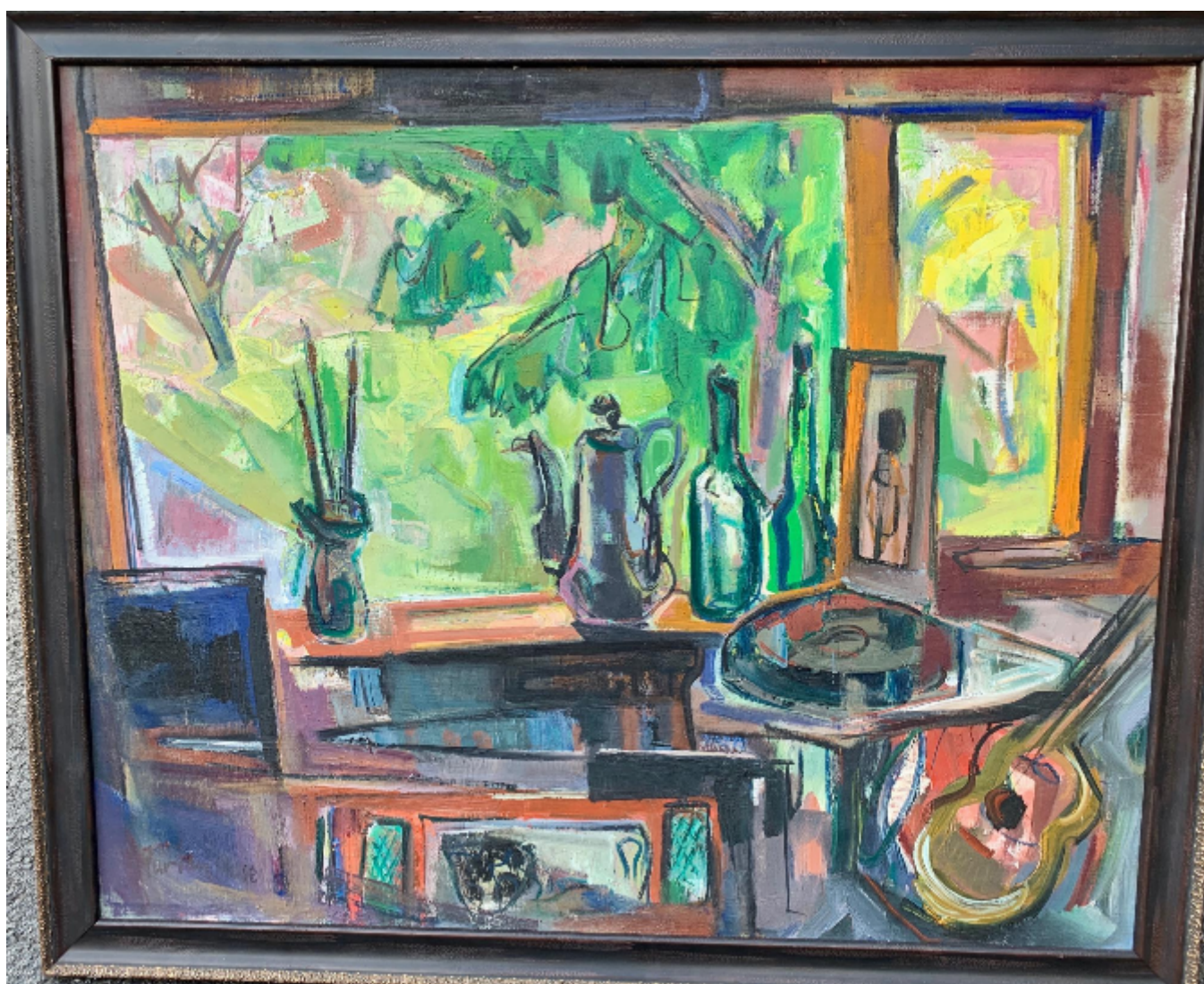


Interior scene of the artists studio  
Marion Huse

\$4,950



REF: 2040

Height: 76.5 cm (30.1")

Width: 102 cm (40.2")

## Description

A printmaker, painter, and commercial artist, Marion Huse created work that ranged from realism to abstraction and included portraits, figure subjects, landscapes, and floral still lifes. She traveled widely throughout New England, New York, Quebec, Europe, and the Western United States. She was also an innovative serigrapher, and her serigraphs and monographs were exhibited widely including a major exhibition at the Brockton Art Museum (now Fuller Craft Museum) in Massachusetts in 1985. The Museum owns a large collection of work by the artist.